

To set-up an email account simply follow these instructions, **NB: although it was written for Outlook Express the key steps are the same today!**

Support Database

How do I configure email using Outlook Express?

To setup Outlook Express to work with your InternetM8.net mail account please follow these instructions.

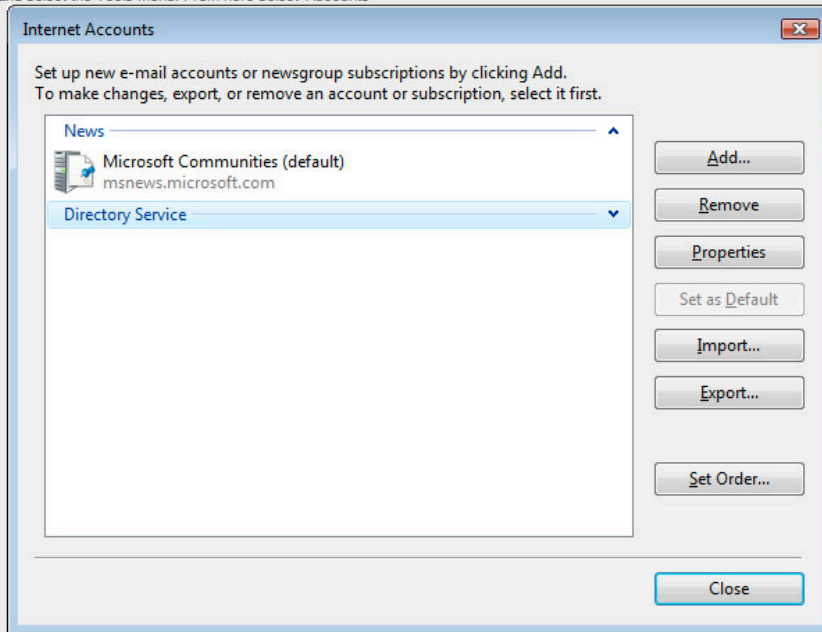


[Email Now](#)

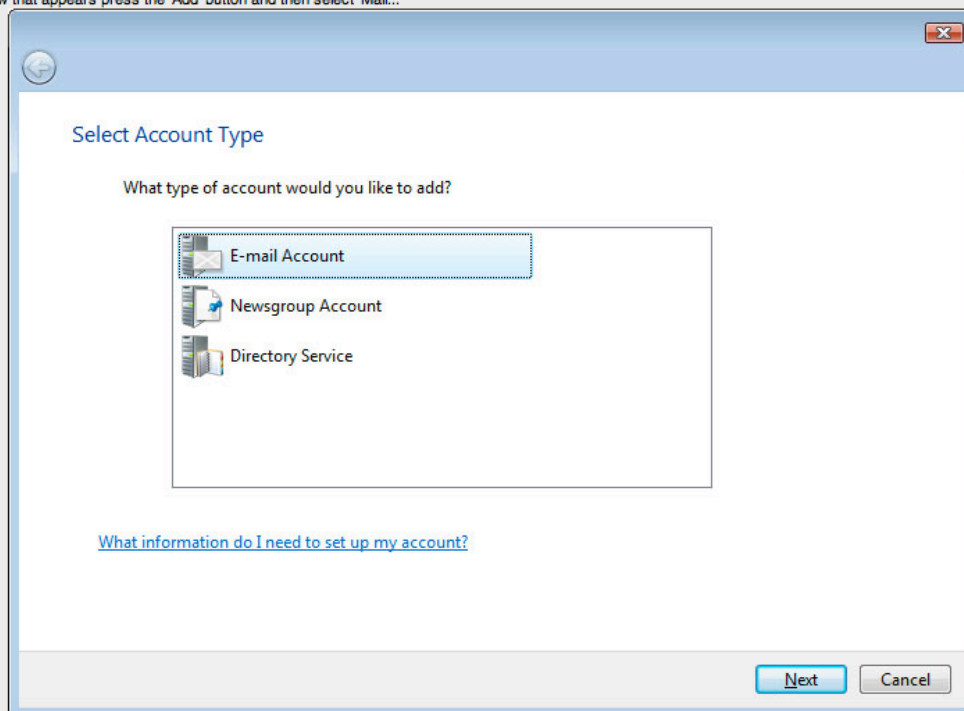


[Print Now](#)

1. Start Outlook Express and select the Tools menu. From here select 'Accounts'



2. In the window that appears press the 'Add' button and then select 'Mail...'



3. Enter your name as you would like it to appear to people who receive emails from you. Then click 'Next'.

The screenshot shows a dialog box titled "Set up e-mail servers". It contains the following fields and options:

- Incoming e-mail server type:** A dropdown menu with "IMAP" selected.
- Incoming mail (POP3 or IMAP) server:** A text input field containing "mail.yourdomain.co.uk".
- Outgoing e-mail server (SMTP) name:** A text input field containing "mail.yourdomain.co.uk".
- Outgoing server requires authentication:** A checked checkbox.
- [Where can I find my e-mail server information?](#)
- Buttons: "Next" and "Cancel".

4. Enter the email address that you want to use and that you have setup with InternetM8.net. Then click 'Next'.

The screenshot shows a dialog box titled "Internet E-mail Address". It contains the following fields and options:

- Your e-mail address is the address other people use to send e-mail messages to you.**
- E-mail address:** A text input field containing "youname@yourdomain.co.uk".
- For example: someone@microsoft.com
- [Where can I find my e-mail account information?](#)
- Buttons: "Next" and "Cancel".

5. Now you need to enter your incoming and outgoing servers. For the incoming server you should enter mail.yourdomain.com – substituting your own domain name for yourdomain.com. For the outgoing mail server you should enter mail.yourdomain.com as before. Then click Next.

Set up e-mail servers

Incoming e-mail server type:
POP3

Incoming mail (POP3 or IMAP) server:
mail.yourdomain.co.uk

Outgoing e-mail server (SMTP) name:
mail.yourdomain.co.uk

Outgoing server requires authentication

[Where can I find my e-mail server information?](#)

Next Cancel

6. To finish you need to enter your username (which is your full email address) and password for your mail account. You can view your username and password in InternetM8 Control Panel. Once entered please click Next and then Finish.

Internet Mail Logon

Type the account name and password your Internet service provider has given you.

E-mail username: yourname@yourdomain.co.uk

Password:

Remember password

Next Cancel

7. To allow you to send mail through our mail server you now need to make a small change to the properties of the account. Select 'Properties' from the 'Accounts' window. You need to click the tick-box that says 'My server requires authentication' or 'This server requires me to log on' and then click 'OK' and 'Close':

8. You can now send and receive emails!

[This information is also available on our website: in the FAQ \(Frequently Asked Questions\) section:](#)

www.internetM8.net > CUSTOMER TOOLS > [FAQ](#)

- [Setting_up_an_email_Account_on_a_PC](#)
- [Setting_up_an_email_Account_in_Apple_Mail](#)
- [Webmail_Instructions](#)